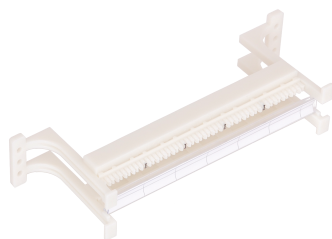


## NMC-CB110-50L

110 type wall-mounted switching unit , with legs



110 type crosses are used for cutting cables of various SCS subsystems on them. The main advantage is patch each individual pair, providing high flexibility in cabling reconfiguration. Connection and switching is carried out using 110 type connectors or appropriate patch cords. The breakout boxes are usually wall-mounted and come in two configurations, with and without built-in plastic mounting feet. The option with legs provides more convenient cable routing. To work more conveniently with 110 blocks, labels are applied to the mounting grooves every 5 pairs. The leg units are also labeled with removable transparent holders.

Switching units **NMC-CB110-50L** and **NMC-CB110-50NL** have 50 pairs. For sealing 110 panels, blocks and connectors, it is recommended to use the **NMC-315DR punch down tool** of several pairs simultaneously (4 or 5, depending on the nozzle). It facilitates greatly and speeds up the work.

### Ordering Table

| P/N          | Number of pairs | Type      | Individual packaging |            | Group packing |                | Transport packaging |          |                |            |
|--------------|-----------------|-----------|----------------------|------------|---------------|----------------|---------------------|----------|----------------|------------|
|              |                 |           | Volume, m3           | Weight, kg | Quantity      | Dimensions, mm | Weight, kg          | Quantity | Dimensions, mm | Weight, kg |
| NMC-CB110-50 |                 | With legs | 0.00086              | 0.115      | 6 pcs         | 280x100x280    | 1                   | 60 pcs   | 580x530x300    | 10.2       |

## Detailed characteristics

| Characteristic     | Value   |
|--------------------|---|
| Type               | With legs   |
| Temperature ranges | Storage from -40 to +70 °C. Installation from 0 to +50 °C. Operation from -10 to +60 °C |
| Warranty           | 1 year  |
| Number of ports    | 50  |
| Plastic material   | Conforms to UL 94V-0  |
| Marking            | Every 5 pairs   |
| Installation       | Wall  |
| Protection level   | White   |
| Packaging          | Individual - cardboard box, 10 pcs  |