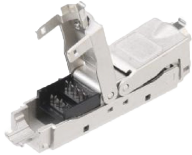


NMC-CCSA22C-MT

NIKOMAX In-line Coupler, cat. 6a, IDC-IDC, Shielded



NIKOMAX In-line coupler are designed for installation in faceplates, surface mounting boxes and modular patch panels. In-line coupler are widely used for connection workplaces to local network.

NMC-CCSA22C-MT In-line coupler with IDC comply with category 6 and are shielded, connectors are made in cast, fully shielded zinc-aluminum alloy housings. IDC coplers are universal and functional solutions for connecting two cable segments. IDC plunge connections provide a reliable and high-quality connection, unlike RJ45-RJ45 connectors, which have little effect on the line. Supplied individually, in an individual polyethylene bag with perforation – similar to switching modules.

Ordering Table

| P/N | Cat. | Type. | Individual package | | Group package | | Freight package | | | |
|--------------|------|----------|--------------------|------------|---------------|----------------|-----------------|----------|----------------|------------|
| | | | Dimensions, mm | Weight, kg | Quantity | Dimensions, mm | Weight, kg | Quantity | Dimensions, mm | Weight, kg |
| NMC-CCSAE:6a | | Shielded | - | 0.031 | 25 | 210x140x100 | - | 250 | 535x313x234 | 10.000 |

Detailed characteristics

| Characteristic | Value |
|------------------------------------|--|
| Category | 6a |
| Bandwidth, MHz | 500 |
| Connection style | Shielded |
| Connector type | IDC-IDC |
| Connector material in connector | Phosphor bronze |
| Contact coating material | Gold (50 micro-inches) |
| Number of cable connections | Not less than 1000 |
| Housing material | Zinc-aluminum alloy |
| Color | Metallic |
| Compliance | Exceeds standards: ISO / IEC 11801, EN 50173 and TIA / EIA-568 |
| Supported applications | 10BASE-T, 100BASE-TX, 100BASE-T4, 1000BASE-T, 10G-BASE-T, ATM-25, ATM-51, ATM-155, 100VG-AnyLan, TR-4, TR-16 Active, TR-16 Passive |
| Temperature range | Storage from -40 to + 70 °C. Operation from -10 to +60 °C |
| Packaging | Individual - PE bag |
| Warranty | 5 years |
| Permissible diameter of conductors | 23-26AWG |