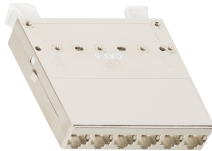


NMC-CJ06SE2-1S-MT

Cassette module, shielded, category 6



The cassette modules are designed exclusively for mounting in the cassette panel NIKOMAX NMC-RP08-BLANK-CJ-1U-MT.

The NMC-CJ06SA2-1S-MT (Cat.6A) and NMC-CJ06SE2-1S-MT (Cat.6) cassettes are made in fully shielded steel enclosures and are a kind of reduced versions of shielded patch panels - a capacity of 6 ports RJ45 / 8P8C. Universal IDC contacts 110 / KRONE are located inside the cassettes, on a horizontal substrate. Cabling is made by two standards: T568 A and B.

The cable screens are pairwise grounded to the screw terminals. The 9th grounding IDC contact is provided - specifically for the drain cable conductor. On both sides of the printed circuit board there are common ground buses. For better shielding from electromagnetic interference and better communication with the panel body, the steel cassette cases are galvanized with nickel.

Ordering Table

P/N	Cat.	Number of ports	Individual package		Freight package		
			Dimensions, mm	Weight, kg	Quantity	Dimensions, mm	Weight, kg
NMC-CJ06SE2-1S-6		6	125x100x23	0.325	48 pcs.	515x375x240	16.9

Detailed characteristics

Characteristic	Value
Category	6
Bandwidth, MHz	250
Connection style	Fully shielded
Compliance	Exceeds the requirements of the standards: ISO / IEC 11801, EN 50173 and ANSI / TIA -568-C.2
Supported applications	10BASE-T, 100BASE-TX, 100BASE-T4, 1000BASE-T, 10G-BASE-T (For Cat. 6), ATM-25, ATM-51, ATM-155, 100VG-AnyLan, TR-4, TR-16 Active, TR-16 Passive
Temperature ranges	Storage from -40 to +70°C. Installation from 0 to +50°C. Operation from -10 to +60°C
Individual packing	Cardboard box
Warranty	5 years - extended; 25 years - as part of the certified NIKOMAX SCS
Connector type	RJ45/8P8C
Connector material in connector	Phosphor bronze
Contact coating material	Gold (50 micro-inches) over nickel (100 micro-inches)
Number of cable connections	Not less than 750 times
Type of IDC contacts (seal)	110/KRONE
Layout diagram	T568A/B
IDC Contact material	Phosphor bronze
IDC coating material	Tin (100 micro-inches)
Marking	Absent. Performed on stickers (complete with cassette panel)
Installation	NIKOMAX Cassette panel - CJ series
Protection level	Metallic (nickel)
Insulation resistance	At least 500 M ohms (at a constant voltage of 100 V)
Maximum load-bearing capacity	Up to 1000 V, 60 Hz for 1 minute
Contact resistance, $\mu\Omega$	Not more than 20
IDC Contact resistance, $\mu\Omega$	Not more than 2.5
Permissible diameter of conductors	~24-22 AWG (0.50-0.65 mm)
Housing material	Nickel-plated steel: housing-1.5 mm; Cover-1 mm
Number of ports	6