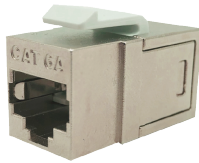


## NMC-KJSA55C-MT

NIKOMAX In-line Coupler, RJ45-RJ45, with the latch



NIKOMAX In-line coupler are designed for installation in faceplates, surface mounting boxes and modular patch panels. In-line coupler are widely used for connection workplaces to local network.

NMC-KJSA55C-MT (Cat.6A) In-line coupler are made from durable material in shielded housing. All couplers are made in the same design and fully compatible with all NIKOMAX components. And allows you to extend the length of two patch cords quickly and easily.

### Ordering Table

P/N	Cat.	Connection style	Transport box	Dimensions, mm	Weight, kg
			Quantity		
NMC-KJSA55C-MT	6A	Shielded	150	260 x 200 x 230	3.86

NIKOMAX In-line Coupler, RJ45-RJ45, with the latch

## Detailed characteristics

Characteristic	Value
Category	6A
Bandwidth, MHz	500
Connection style	Shielded
Connector type	RJ45-RJ45
Connector material in connector	Phosphor bronze
Contact coating material	Gold (50 micro-inches)
Number of cable connections	Not less than 750
Housing material	Zinc-aluminum alloy
Color	Metallic
Dimensions, WxHxD	30.5 x 19.4 x 16.4
Compliance	Exceeds standards: ISO / IEC 11801, EN 50173 and TIA / EIA-568
Supported applications	10BASE-T, 100BASE-TX, 100BASE-T4, 1000BASE-T, 10G-BASE-T (For Cat. 6 & 6A), ATM-25, ATM-51, ATM-155, 100VG-AnyLan, TR-4, TR-16 Active, TR-16 Passive
Temperature range	Storage from -40 to + 70 °C. Operation from -10 to +60 °C
Packaging	Individual - PE bag
Warranty	1 year