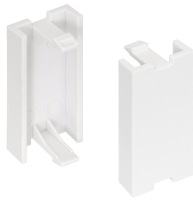


NMC-PM0P-PH-WT

Mosaic format insert, 22.5x45 mm



For the organization of information ports in the workplace with the help of boxes, columns and internal sockets, a wide range of inserts of the French standard Mosaic 22.5x45 mm and 45x45 mm are used. The inserts are fixed in the front panels with the help of convenient latches and, if necessary, are easily dismantled. Depending on the model, 1 or 2 Keystone modules of any type are installed in the insert.

The inserts are provided with a curtain to protect the socket from dust when the patch cord is disconnected. Complete with inserts is a set of colored icons. In addition, there are additional areas for marking, closed with removable transparent covers.

Ordering Table

P/N	Number of ports	Individual package		Collective package			Freight package		
		Volume, m3	Weight, kg	Quantity	Dimensions, mm	Weight, kg	Quantity	Dimensions, mm	Weight, kg
NMC-PM0P-PH-		0.000084	0.005	140 pcs.	250x190x210	1.2	560 pcs.	515x400x230	5.7

Detailed characteristics

Characteristic	Value
Temperature ranges	Storage from -40 to +70 ° C. Installation from 0 to +50 ° C. Operation from -10 to +60 ° C
Individual packing	Plastic bag
Warranty	1 year
Plastic material	Meets UL94V-0
Installation	Faceplates, boxes and wall boxes with Mosaic windows 45x45
Protection level	White
Dimensions (WxHxD), mm	45x22.5x18.5
Size	Mosaic 22.5x45 mm
Insert type	Flat plug