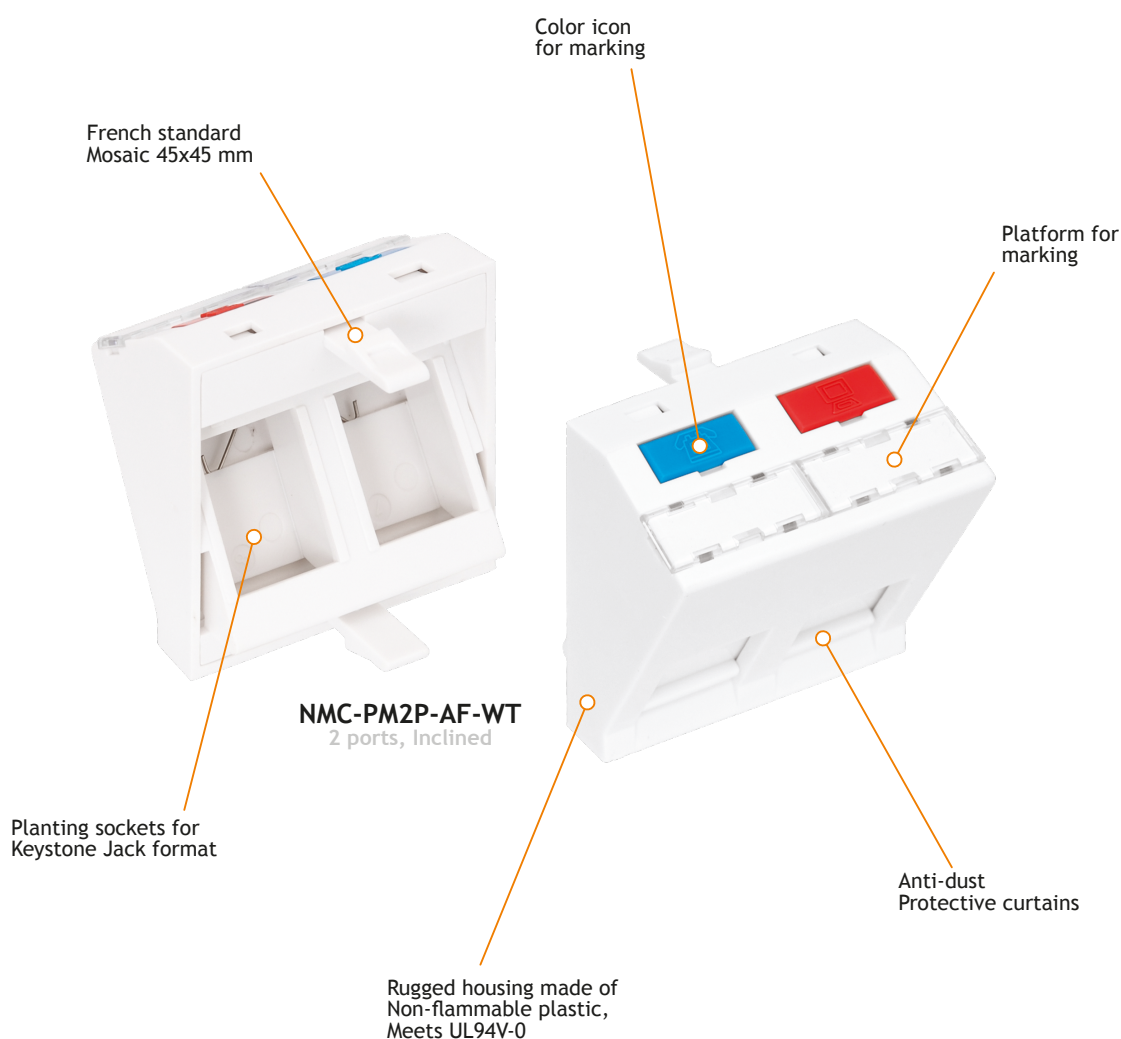


For the organization of information ports in the workplace with the help of boxes, columns and internal sockets, a wide range of inserts of the French standard Mosaic 22.5x45 mm and 45x45 mm are used. The inserts are fixed in the front panels with the help of convenient latches and, if necessary, are easily dismantled. Depending on the model, 1 or 2 Keystone modules of any type are installed in the insert.

The inserts are provided with a curtain to protect the socket from dust when the patch cord is disconnected. Complete with inserts is a set of colored icons. In addition, there are additional areas for marking, closed with removable transparent covers.



### Accessories

FT module,  
FT-TOOL/110/KRONE:  
NMC-KJSA2-FT-MT  
NMC-KJSE2-FT-MT  
NMC-KJSD2-FT-MT  
NMC-KJUE2-FT-WT  
NMC-KJUD2-FT-WT

NT module,  
Tool-less:  
NMC-KJSA2-NT-MT  
NMC-KJSE2-NT-MT  
NMC-KJSD2-NT-MT  
NMC-KJUE2-NT-WT  
NMC-KJUD2-NT-WT

110 / KRONE type modules:  
NMC-KJUE2-WT  
NMC-KJUD2-WT  
NMC-KJUC3-WT

Cable Cuter:  
NMC-502C  
NMC-222

Tool for  
Twisted-pair termination:  
NMC-FT-TOOL  
NMC-3640RB

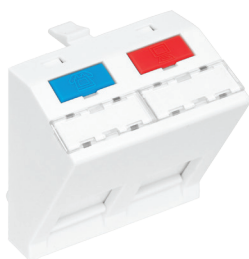
Cable Stripper:  
NMC-S501B

### Ordering Table

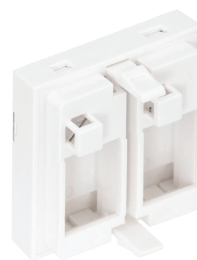
|                    | NMC-PM2P-AF-WT | NMC-PM2P-PF-WT | NMC-PM1P-PF-WT | NMC-PM1P-PH-WT | NMC-PM0P-PH-WT |
|--------------------|----------------|----------------|----------------|----------------|----------------|
| 45x45 Box          | 1 pc.          | 1 pc.          | 1 pc.          | 1 pc.          | 1 pc.          |
| Labels for marking | 2 pcs.         | 2 pcs.         | 1 pc.          | 1 pc.          | –              |
| Set of color icons | 2 pcs.         | 2 pcs.         | 2 pcs.         | 2 pcs.         | –              |



**NMC-PM2P-AF-WT**  
2 ports, 45x45 mm, inclined



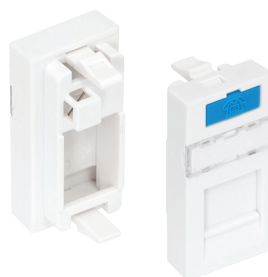
**NMC-PM2P-PF-WT**  
2 ports, 45x45 mm, flat



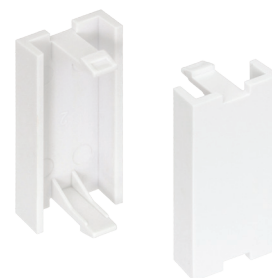
**NMC-PM1P-PF-WT**  
1 port, 45x45 mm, flat



**NMC-PM1P-PH-WT**  
1 port, 22.5x45 mm, flat



**NMC-PM0P-PH-WT**  
Plate, 22.5x45 mm, flat



## Specification

|                           | NMC-PM2P-AF-WT   | NMC-PM2P-PF-WT  | NMC-PM1P-PF-WT  | NMC-PM1P-PH-WT    | NMC-PM0P-PH-WT    |
|---------------------------|--|-----------------|-----------------|-------------------|-------------------|
| Size                      | Mosaic 45x45 mm  | Mosaic 45x45 mm | Mosaic 45x45 mm | Mosaic 22.5x45 mm | Mosaic 22.5x45 mm |
| Insert type               | Included   | Flat            | Flat            | Flat              | Flat plug         |
| Number of ports           | 2  | 2               | 1               | 1                 | –                 |
| Type of installed modules | Keystone   |                 |                 |                   | –                 |
| Protective curtains       | Yes  |                 |                 |                   | –                 |
| Marking                   | Color icons and additional windows for marking   |                 |                 |                   | –                 |
| Plastic material          | Complies with UL94V-0  |                 |                 |                   |                   |
| Color                     | White  |                 |                 |                   |                   |
| Installation              | Front panels, boxes and calipers of wall boxes with windows Mosaic 45x45                   |                 |                 |                   |                   |
| Dimensions, WxHxD         | 45x45x38 mm  | 45x45x18.5 mm   | 45x45x18.5 mm   | 45x22.5x18.5 mm   | 45x22.5x18.5 mm   |
| Temperature ranges        | Storage from -40 to +70 ° C. Installation from 0 to +50 ° C. Operation from -10 to +60 ° C |                 |                 |                   |                   |
| Warranty                  | 1 year   |                 |                 |                   |                   |
| Packaging                 | Individual - plastic bag   |                 |                 |                   |                   |

## Ordering Table

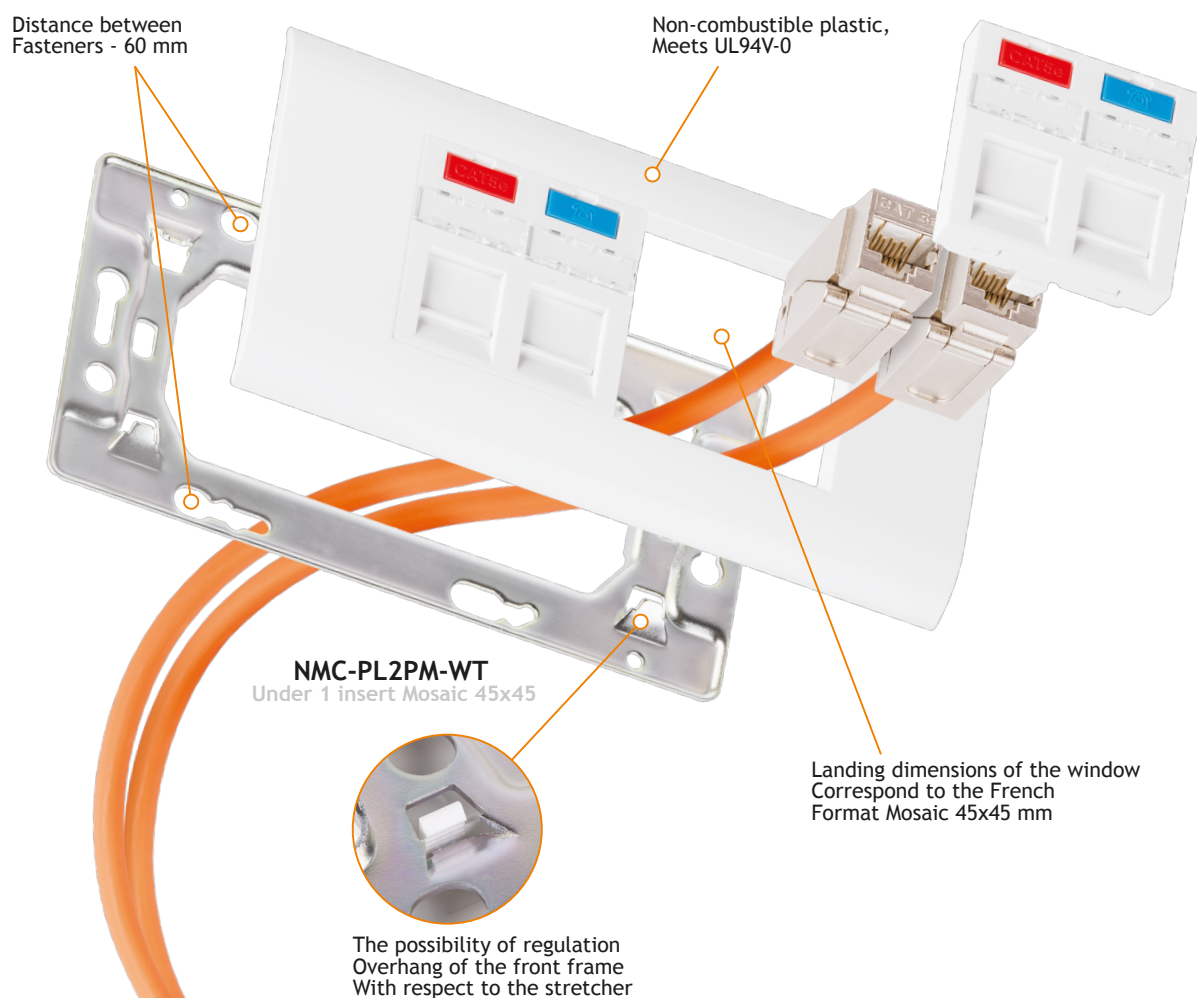
| Part Number    | Ports | Individual package     |            | Collective package |                |            | Freight package |                |            |
|----------------|-------|------------------------|------------|--------------------|----------------|------------|-----------------|----------------|------------|
|                |       | Volume, m <sup>3</sup> | Weight, kg | Quantity           | Dimensions, mm | Weight, kg | Quantity        | Dimensions, mm | Weight, kg |
| NMC-PM2P-AF-WT | 2     | 0.000167               | 0.015      | 70 pcs.            | 250x190x210    | 1.2        | 280 pcs.        | 515x400x230    | 5.9        |
| NMC-PM2P-PF-WT | 2     | 0.000118               | 0.016      | 100 pcs.           | 250x190x210    | 1.8        | 400 pcs.        | 515x400x230    | 8.2        |
| NMC-PM1P-PF-WT | 1     | 0.000118               | 0.015      | 100 pcs.           | 250x190x210    | 1.7        | 400 pcs.        | 515x400x230    | 7.7        |
| NMC-PM1P-PH-WT | 1     | 0.000098               | 0.010      | 120 pcs.           | 250x190x210    | 1.4        | 480 pcs.        | 515x400x230    | 6.5        |
| NMC-PM0P-PH-WT | –     | 0.000084               | 0.005      | 140 pcs.           | 250x190x210    | 1.2        | 560 pcs.        | 515x400x230    | 5.7        |

NIKOMAX Wall-mounted faceplates are designed to install inserts for modules such as Keystone to organize information ports in the workplace, as well as to install other mechanisms compatible with the French standard Mosaic (45x45 mm).

The front panels **NMC-PL1PM-WT**, **NMC-PL2PM-WT** and **NMC-PL3PM-WT** hold 1, 2 or 3 inserts of Mosaic format 45x45 mm, respectively. At the base of the panels there are metal subframes for mounting on the mounting boxes and coasters with an interaxial distance between the screws of 60 mm. The outreach of the front frame with respect to the subframe can be adjusted within up to 3 millimeters.

## Package Content

Front panel with subframe - 1 pc.  
Modules and faceplate inserts are sold separately



## Accessories

Faceplate insert 45x45:

NMC-PM2P-AF-WT  
NMC-PM2P-PF-WT  
NMC-PM1P-PF-WT  
NMC-PM1P-PH-WT

Insert:

NMC-PM0P-PH-WT

FT module,  
FT-TOOL/110/KRONE:

NMC-KJSA2-FT-MT  
NMC-KJSE2-FT-MT  
NMC-KJSD2-FT-MT  
NMC-KJUE2-FT-WT  
NMC-KJUD2-FT-WT

NT module,  
Tool-less:

NMC-KJSA2-NT-MT  
NMC-KJSE2-NT-MT  
NMC-KJSD2-NT-MT  
NMC-KJUE2-NT-WT  
NMC-KJUD2-NT-WT

110/KRONE type module:

NMC-KJUE2-WT  
NMC-KJUD2-WT  
NMC-KJUC3-WT



**NMC-PL1PM-WT**

Under 1 insert Mosaic 45x45 mm



**NMC-PL2PM-WT**

Under 2 inserts Mosaic 45x45 mm



**NMC-PL3PM-WT**

Under 3 inserts Mosaic 45x45 mm

## Specification

|                                       | NMC-PL1PM-WT   | NMC-PL2PM-WT | NMC-PL3PM-WT |
|---------------------------------------|--|--------------|--------------|
| Number of ports                       | 1  | 2            | 3            |
| Type of inserts to be installed       | Mosaic 45x45 mm and 22.5x45 mm   |              |              |
| Plastic material                      | Meets UL94V-0  |              |              |
| Color                                 | White  |              |              |
| Installation                          | Wall-mounted, with metal subframe  |              |              |
| Dimensions (on the front side), WxHxD | 80x80x8 mm   | 148x80x8 mm  | 240x80x8 mm  |
| Temperature ranges                    | Storage from -40 to +70 ° C. Installation from 0 to +50 ° C. Operation from -10 to +60 ° C |              |              |
| Warranty                              | 1 year   |              |              |
| Packaging                             | Individual - plastic bag   |              |              |

## Order Table

| Part Number  | Nests     | Individual package     |            | Collective package |               |            | Freight package |               |            |
|--------------|-----------|------------------------|------------|--------------------|---------------|------------|-----------------|---------------|------------|
|              |           | Volume, m <sup>3</sup> | Weight, kg | Quantity           | Dimension, mm | Weight, kg | Quantity        | Dimension, mm | Weight, kg |
| NMC-PL1PM-WT | 1x Mosaic | 0.000124               | 0.050      | 80 pcs.            | 250x190x210   | 4.3        | 320 pcs.        | 515x400x230   | 17.4       |
| NMC-PL2PM-WT | 2x Mosaic | 0.000399               | 0.085      | 25 pcs.            | 250x190x210   | 2.4        | 100 pcs.        | 515x400x230   | 9.9        |
| NMC-PL3PM-WT | 3x Mosaic | 0.000498               | 0.105      | 20 pcs.            | 250x190x210   | 2.4        | 80 pcs.         | 515x400x230   | 9.9        |