

NMF-SC-2V-48-4HS

NIKOMAX Splice Closure, 48 fibers, 4 I/O, with an input for a transit loop, with thermal sealing of the inputs, with a kit for fasteners

- ✓ Installation on poles, on suspensions, underground, in communication channels, on vertical surfaces.
- ✓ Simplicity and speed of installation and fixation of fibers, as well as repeated access to the coupling, which does not require additional tools

Optical splice closure **NMF-SC-2V-48-4HS** is designed to be fixed on the supports of overhead cable lines, walls of buildings and structures. It is advantageous to use small capacitance couplings in places of broaching peripheral communication lines and in places of branches of peripheral lines to subscriber lines. Recommended for places with high humidity and high content of dust in the air.

The clutch is equipped with a special mechanical locking system in the form of two semi-braids with a lock, fixed by a special bolt, which greatly facilitates the assembly of the clutch, as well as access to the clutch during maintenance and repair.

The “hot” method of assembling and sealing cable glands with heat shrinkable tubing increases the strength of the cable fixation system, the anti-vandal resistance of the coupling and ensures absolute isolation from dust and moisture. The body is made of impact-resistant frost-resistant polycarbonate.



The manufacturer reserves the right to change the appearance and characteristics of the product, without reducing its consumer properties

Package Content:

| | |
|-----------------------------------|-------|
| Housing | 1 pcs |
| Mechanical locking system | 1 pcs |
| Seal fitting | 1 pcs |
| Splice tray | 4 pcs |
| Frame for fixing | 1 pcs |
| Earthing deriving device | 1 set |
| Accessories | 1 set |
| Instruction manual | 1 pcs |
| Tools set | 1 set |
| Heat shrinkable sleeves for ports | 4 pcs |

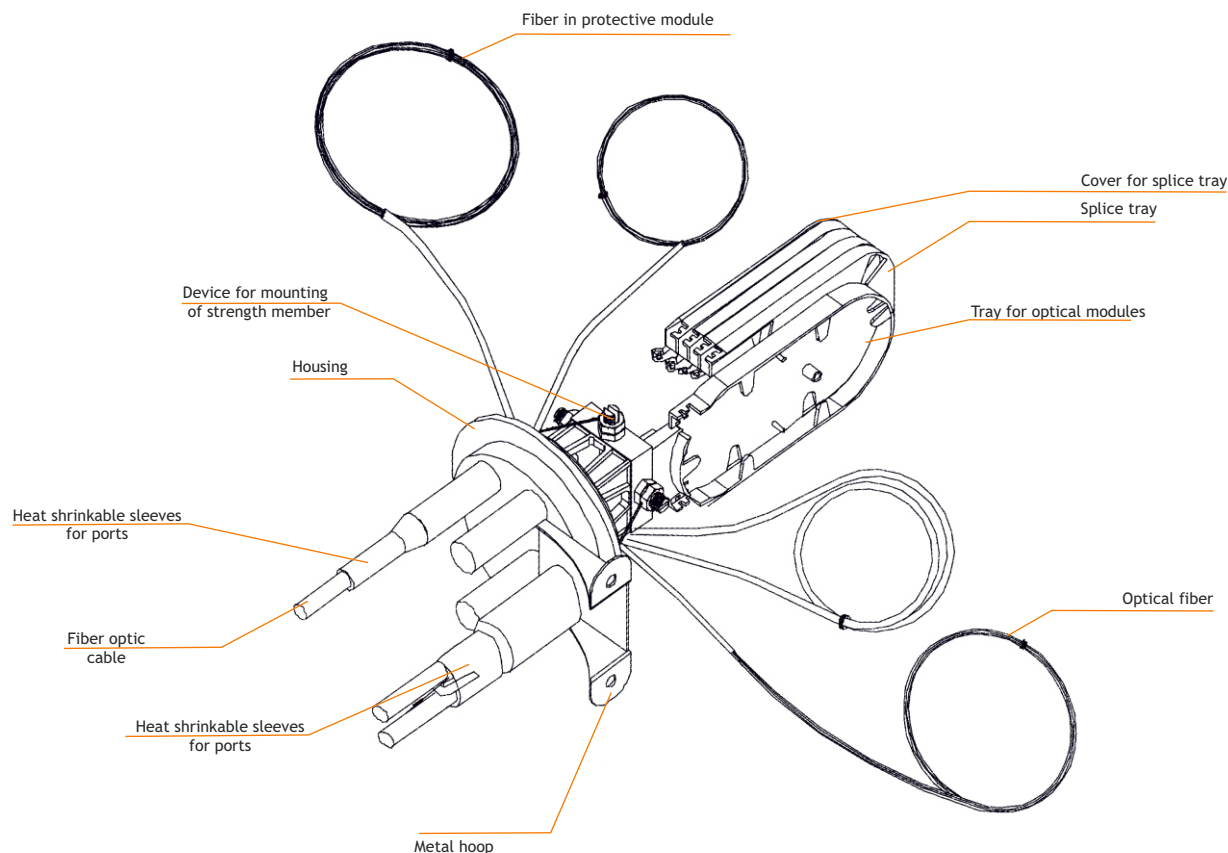
SPECIFICATION

| | |
|------------------------------|------------------------------|
| Part Number | NMF-SC-2V-48-4HS |
| Outside dimension | 435xØ157 mm |
| Weight | 1.8 kg |
| Capacity, max | 48 |
| Number of inlet/outlet ports | 4 (3 round + 1 ellipse) |
| Diameter of fiber cable | 3 x 16 mm / 1 x (25 x 44) mm |
| Temperature ranges | - 50 C to + 70 C |
| Individual packing | Carton box |

ORDERING TABLE

| Part Number | Number of cable entries | Max. Cable diameter | Volume, m3 | Weight, kg |
|------------------|-------------------------|------------------------------|------------|------------|
| NMF-SC-2V-48-4HS | 4 (3 round + 1 ellipse) | 3 x 16 mm / 1 x (25 x 44) mm | | |

DRAWING



The manufacturer reserves the right to change the appearance and characteristics of the product, without reducing its consumer properties