

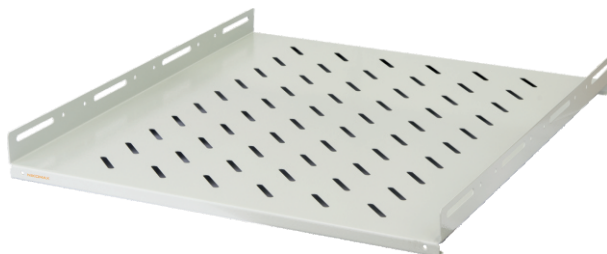
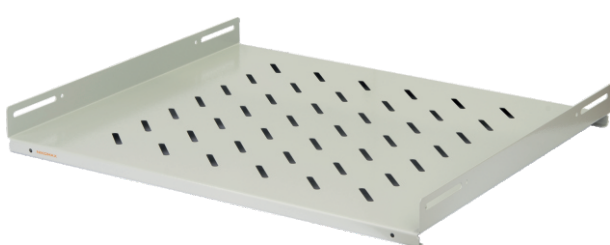
## NMR-SHFS-XXX-GY

NIKOMAX fixed shelf for wall and floor cabinets NMR-series, thickness 1.2 mm, grey RAL7035

- ✓ Perforated foundation
- ✓ Fastener assembly included
- ✓ Impact-resistant coating

Fixed shelf is made of sheet steel. The surface of the shelf is perforated for better ventilation of equipment. Mounting is carried out at four points on the side surfaces of perforated profiles

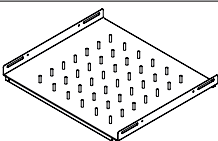
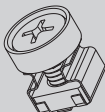
It is intended to be used for to install and support heavy equipment in wall and floor telecommunication cabinets NIKOMAX NMR-series in accordance with the accessories compatibility table.



### Specifications

Part number	NMR-SHFS-W45-GY	NMR-SHFS-W60-GY	NMR-SHFS-F60-GY	NMR-SHFS-F80-GY
Parameters				
Depth L, mm	275	425	350	550
Installation size L1, mm	175	325	250	450
Shelf weight, kg	2.0	2.1	2.3	4.1
Type of cabinet for installation	wall		floor	
Width, mm	489		472	
Coating	powder, polymer-epoxy, grey, RAL 7035			
Material	cold rolled steel sheet 1.2 mm			
Height, mm	48			
Peak load, kg	100			

### STANDART CONFIGURATION

Accessories			
№		Item	Quantity, pcs.
1		shelf	1
2		Screw M6x12, plastic washer, nut M6	4

### DESCRIPTIONS

Part number	Name
NMR-SHFS-W45-GY	NIKOMAX Fixed Shelf NMR-Series Wall Mount Cabinets With a Depth of 450mm, Thickness 1.2mm, W490xD250xH48mm, Grey RAL7035
NMR-SHFS-W60-GY	NIKOMAX Fixed Shelf NMR-Series Wall Mount Cabinets With a Depth of 600mm, Thickness 1.2mm, W490xD350xH48mm, Grey RAL7035
NMR-SHFS-F60-GY	NIKOMAX Fixed Shelf NMR-Series Floor-standing Cabinets With a Depth of 600mm, Thickness 1.2mm, W471xD350xH48mm, Grey RAL7035
NMR-SHFS-F80-GY	NIKOMAX Fixed Shelf NMR-Series Floor-standing Cabinets With a Depth of 800mm, Thickness 1.2mm, W471xD550xH48mm, Grey RAL7035

### ORDER TABLE

Part number	Type of cabinet for installation	Width shelves mm	Shelf depth, mm	Cabinet Depth, mm	Package Size H×W×D, mm	Container size, m <sup>3</sup>	Weighting, kg
NMR-SHFS-W45-GY	wall	489	275	450	60×530×300	0.00954	2.0
NMR-SHFS-W60-GY	wall	489	425	600	60×550×450	0.01485	2.6
NMR-SHFS-F60-GY	floor	472	350	600	60×370×520	0.01154	2.2
NMR-SHFS-F80-GY	floor	472	550	800	60×590×480	0.01699	3.4

### STANDART CONFIGURATION

