

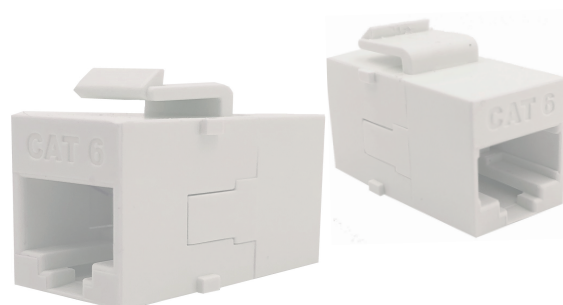
NMC-KJUD55C-WT - Cat.5e Unshielded
NMC-KJUE55C-WT - Cat.6 Unshielded
NMC-KJUA55C-WT - Cat.6a Unshielded

- ✓ Contact plating material in the connector - gold (50 micro-inch)
- ✓ Keystone type design

NIKOMAX In-line Coupler, RJ45-RJ45, with the latch

NIKOMAX In-line coupler are designed for installation in faceplates, surface mounting boxes and modular patch panels. In-line coupler are widely used for connection workplaces to local network.

NMC-KJUD55C-WT (Cat.5e), NMC-KJUE55C-WT (Cat.6), NMC-KJUA55C-WT (Cat.6a) In-line coupler are made from durable material in unshielded housing. All couplers are made in the same design and fully compatible with all NIKOMAX components. And allows you to extend the length of two patch cords quickly and easily.



NMC-KJUE55C-WT
UTP, Cat.6

Specifications

Part Number	NMC-KJUD55C-WT	NMC-KJUE55C-WT	NMC-KJUA55C-WT
Category	5e	6	6a
Bandwidth, Mhz	250		
Connection style	Unshielded		
Connector type	RJ45-RJ45		
Connector material in connector	Phosphor bronze		
Contact coating material	Gold (50 micro-inches)		
Number of cable connections	Not less than 750		
Housing material	High-strength, non-flammable, compliant to UL94V-0		
Color	White		
Dimensions, WxHxD	30.5 x 19.3 x 14.6		
Compliance	Exceeds standards: ISO / IEC 11801, EN 50173 and TIA / EIA-568		
Supported Applications	10BASE-T, 100BASE-TX, 100BASE-T4, 1000BASE-T, 10G-BASE-T (For Cat. 6 & 6A), ATM-25, ATM-51, ATM-155, 100VG-AnyLan, TR-4, TR-16 Active, TR-16 Passive		
Temperature ranges	Storage from -40 to + 70 °C. Operation from -10 to +60 °C		
Packaging	Individual -		
Warranty	1 year		

Order table

Part number	Cat.	Connection style	Transport box		
			Quantity	Dimensions, mm	Weight, kg
NMC-KJUD55C-WT	5e	Unshielded	150	260 x 200 x 230	1.8
NMC-KJUE55C-WT	6	Unshielded	150	260 x 200 x 230	1.8
NMC-KJUA55C-WT	6a	Unshielded	150	260 x 200 x 230	1.8

The manufacturer reserves the right to change the appearance and characteristics of the product, without reducing its consumer properties

Dimensional drawings

