

# Keystone Jack

## Shielded FT Series

Keystone jacks are designed for installation in faceplates, surface mounting boxes and modular patch panels. Keystone jacks are widely used for connecting workplaces to local network.

NIKOMAX Fast Termination jacks («FT» series) are specifically designed for use with a quick termination tool (NMC-FT-TOOL). All you need is to spread the cable to the module contacts, insert it into the tool and simply squeeze the handles. The accurate and high-quality termination in just a single click! The IDC contacts of FT jack are also compatible with punch down tool with 110/KRONE knife.

The jacks are fully compatible with all NIKOMAX components. Only 17 mm width and a standard height allows you to install them in any snap-in patch panels, including high density models with 0.5U height.

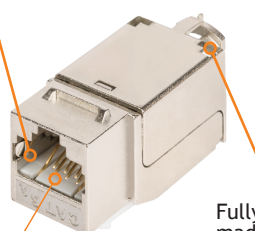
NMC-KJSA2-FT-MT (Cat.6<sub>A</sub>), NMC-KJSE2-FT-MT (Cat.6) and NMC-KJSD2-FT-MT (CAT.5e) are made in fully shielded, zinc-aluminum alloy housing. After install, a shielded cable will be safely locked between a strain relief on the jack cover and a clip from the bottom, providing a full grounding with good electrical contact with the jack body. On the strain relief there is also a mount for the grounding wire.



- ✓ Delta Certified : NMC-KJSA2-FT-MT, NMC-KJSE2-FT-MT
- ✓ ETL Certified : NMC-KJSA2-FT-MT, NMC-KJSE2-FT-MT
- ✓ RoHS & REACH Compliant
- ✓ System Warrantanty - 25 years  
Extended Warranty - 5 years

**NMC-KJSA2-FT-MT**  
RJ45/8P8C, STP, Cat.6

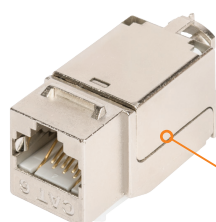
Spring-loaded terminals for reliable contact



Fully shielded design, made from zinc-alloy

50 micro-inch gold-plated contacts will stand more than 750 connection cycles

Contact tracks design minimizes crosstalks in RJ45 socket (for Cat.6 and 6<sub>A</sub>)



**NMC-KJSE2-FT-MT**  
RJ45/8P8C, STP, Cat.6

### Accessories

Surface mount box:  
NMC-MB1P-ST-WT  
NMC-MB2P-ST-WT  
NMC-MB4P-ST-WT  
NMC-MB6P-ST-WT

Modular patch panel:  
NMC-RP24-BLANK-HU-MT  
NMC-RP24-BLANK-1U-MT

Faceplate:  
NMC-PM1P-PH-WT  
NMC-PM1P-PF-WT  
NMC-PM2P-PF-WT  
NMC-PM2P-AF-WT

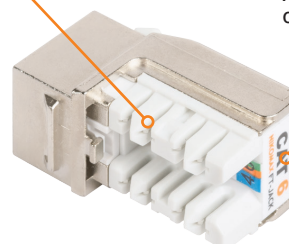
Punch down tool:  
NMC-FT-TOOL  
NMC-3640RB

The unique contact design for use with quick termination device NMC-FT-TOOL. The contacts are also compatible with the 110/Krone knives (recommended to use 110 type knives)

For the convenient termination, IDC have special cutouts, which holds conductors while wiring process



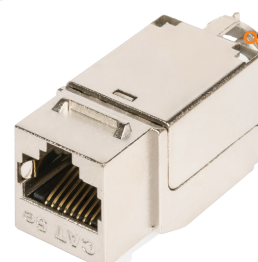
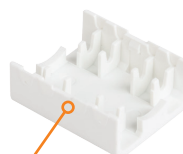
Additional marking on the back side



The clip to consolidate and grounding cable



The wire cap protect the wire in the IDC module



**NMC-KJSD2-FT-MT**  
RJ45/8P8C, STP, Cat.5e

Strain relief for fixation a cable with a tie and optional grounding wire

### Package Content

Module - 1 pc.  
Protective cover - 1 pc.  
Insulating cover - 1 pc.  
Grounding wire - 1 piece.  
Cable tie - 1 pc.  
Installation Instructions - 1 pc.

### Specifications

	NMC-KJSA2-FT-MT	NMC-KJSE2-FT-MT	NMC-KJSD2-FT-MT
Category	6 <sub>A</sub>	6	5e
Bandwidth	500 MHz	250 MHz	100 MHz
Format	Keystone jack		
Type	Shielded		
Connector	RJ45/8P8C		
Conductor Material	Phosphor bronze		
Plating	Gold (50 micro-inches)		
Durability (mating cycles)	Not less than 750		
IDC Type	FT-TOOL or 110/KRONE		
Wiremap	T568A/B		
Conductor Diameter	~ 24-22 AWG (0.50-0.65 mm)		
IDC Conductor Material	Phosphor bronze		
Plating	Tin (100 micro-inches)		
Housing Material	Zinc-alloy		
Plastic Material	High-strength, non-flammable, meets UL94V-0		
Color	Metallic (Nickel)		
Installation	Patch panels, surface mount box, faceplate		
Dimensions, WxHxD	17x19x40 mm		
Insulation Resistance ( $\Omega$ )	Not less than 500 M (at constant voltage of 100 V)		
Dielectric Withstand Voltage	Up to 1000 V, 60 Hz for 1 minute		
Contact Resistance ( $\mu\Omega$ )	Not more than 20		
IDC Contact Resistance ( $\mu\Omega$ )	Not more than 2.5		
Compliance	ISO/IEC 11801, EN 50173 and ANSI/TIA-568-C.2		
Applications	10BASE-T, 100BASE-TX, 100BASE-T4, 1000BASE-T, 10G-BASE-T (for Cat. 6 and 6 <sub>A</sub> ) ATM-25, ATM-51, ATM-155, 100VG-AnyLan, TR-4, TR-16 Active, TR-16 Passive		
Temperature Ranges	Storage -40 to +70 ° C. Installation 0 to +50 ° C. Operating -10 to +60 ° C		
Packaging	Individual - Plastic bag		

### Ordering Table

Part Number	Category	Type	Individual package		Collective package			Freight package		
			Volume, m <sup>3</sup>	Weight, kg	Q'ty	Dimensions, mm	Weight, kg	Q'ty	Dimensions, mm	Weight, kg
NMC-KJSA2-FT-MT	6 <sub>A</sub>	Shielded	0.000069	0.022	150 pcs	250x190x210	3.4	600 pcs.	515x400x230	14.4
NMC-KJSE2-FT-MT	6	Shielded	0.000069	0.022	150 pcs.	250x190x210	3.4	600 pcs.	515x400x230	14.4
NMC-KJSD2-FT-MT	5e	Shielded	0.000069	0.021	150 pcs.	250x190x210	3.1	600 pcs.	515x400x230	13.0

### Drawings

