

Patch Panels

Unshielded Patch Panel, 1U and 2U

Unshielded Patch Panels are designed for connecting different SCS subsystems and network equipment to each other with patch cords. NIKOMAX unshielded patch panel are in black and are intended for installation in a 19" cabinet or rack.

- **NIKOMAX NMC-RP24UE2-1U-BK (Cat.6)** and **NMC-RP24UD2-1U-BK (Cat.5e)** have a standard height of 1U and accommodates 24 ports RJ45 / 8P8C.
- **NIKOMAX NMC-RP48UE2-2U-BK (Cat.6)** and **NMC-RP48UD2-2U-BK (Cat.5e)** is a version of 2U, 48-port RJ45 / 8P8C and are more cost-effective solution.

On the back of the patch panels are contacts for 110 type knives and are color coded on two standards: T568 A and B. A special contact design also allows for terminating cables by KRONE-type knives. For ease of administration, all ports are numbered, and there are additional areas for labeling.

The patch panels offer convenient detachable organizers for routing incoming cables. For administrative convenience, it is also recommended for every 48-port patch panels additionally put organizer for stacking patch cords.



Accessories

Punch
Down
Tool:
NMC-315DR
NMC-3640RB

Cable
Cutter:
NMC-502C
NMC-222

Cable
Stripper:
NMC-S501B

Package Content

Patch panel - 1 pc.
Cable organizer - 1 (2) pcs.
Cable tie - 24 (48) pcs.
Screw-washer-nut - 4 (8) pieces.
Installation Instructions - 1 pc.

The manufacturer reserves the right to alter the appearance and characteristics of the product, without compromising the product's functionality

Patch Panels

Unshielded Patch Panel, 1U and 2U

Specifications

	NMC-RP24UE2-1U-BK	NMC-RP48UE2-2U-BK	NMC-RP24UD2-1U-BK	NMC-RP48UD2-2U-BK
Category	6		5e	
Bandwidth	250 MHz		100 MHz	
Type	Unshielded			
Number of Ports	24	48	24	48
Height	1 U	2 U	1 U	2 U
Connector	RJ45/8P8C			
Connector Material	Phosphor bronze			
Plating	Gold (50 micro-inches) over nickel (100 micro-inches)			
Durability (mating cycles)	Not less than 750			
IDC Type	110 / KRONE			
Wiremap	T568A/B			
Conductor Diameter	~24-22 AWG (0.50-0.65 mm)			
IDC Connector Material	Phosphor bronze			
Plating	Tin (100 micro-inches)			
Plastic Material	High-strength, non-flammable, meets UL94V-0			
Marking	All ports are numbered, there are additional labeling area			
Installation	19" Cabinet or rack			
Depth , without / with organizer	30 / 80 mm			
Support Structure	Steel 1.5 mm			
Color	Black			
Insulation Resistance (Ω)	Not less than 500 M (at constant voltage of 100 V)			
Dielectric Withstand Voltage	Up to 1000 V, 60 Hz for 1 minute			
Contact Resistance (μΩ)	Not more than 20			
IDC Contact Resistance (μΩ)	Not more than 2.5			
Compliance	ISO / IEC 11801, EN 50173 and ANSI/TIA-568-C.2			
Applications	10BASE-T, 100BASE-TX, 100BASE-T4, 1000BASE-T, 10G-BASE-T (55M for Cat. 6), ATM-25, ATM-51, ATM-155, 100VG-AnyLan, TR-4, TR-16 Active, TR-16 Passive			
Temperature Ranges	Storage -40 to +70 ° C. Installation 0 to +50 ° C. Operating -10 to +60 ° C			
Packaging	Cardboard box			
Warranty	5 years - extended; 25 years - as part of the NIKOMAX SCS certified			

Ordering Table

Part Number	Category	Ports	Height, U	Individual package		Freight package		
				Dimensions,mm	Weight, kg	Quantity	Dimensions,mm	Weight, kg
NMC-RP24UE2-1U-BK	6	24	1	510x80x60	0.600	15 pcs.	515x375x240	11.6
NMC-RP48UE2-2U-BK	6	48	2	510x110x80	1.020	10 pcs.	515x375x240	12.8
NMC-RP24UD2-1U-BK	5e	24	1	510x80x60	0.600	15 pcs.	515x375x240	11.6
NMC-RP48UD2-2U-BK	5e	48	2	510x110x80	1.020	10 pcs.	515x375x240	12.8



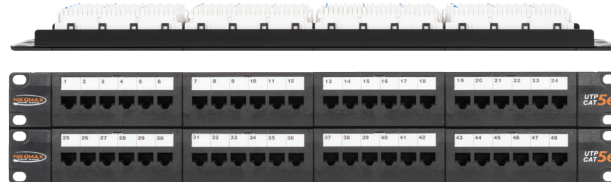
NMC-RP24UE2-1U-BK
1U, UTP, 24 ports Cat.6



NMC-RP48UE2-2U-BK
2U, UTP, 48 ports Cat.6



NMC-RP24UD2-1U-BK
1U, UTP, 24 ports Cat.5e



NMC-RP48UD2-2U-BK
2U, UTP, 48 ports Cat.5e

The manufacturer reserves the right to alter the appearance and characteristics of the product, without compromising the product's functionality